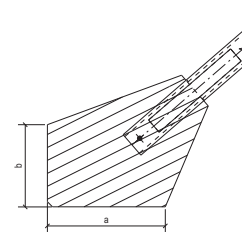


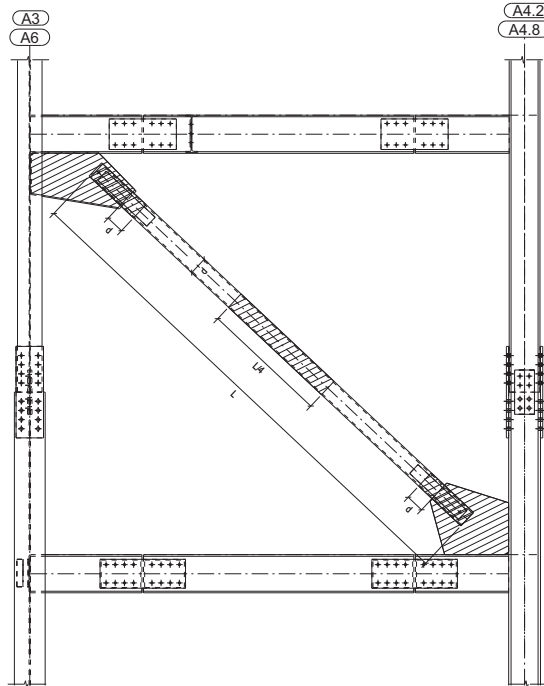
F1 GUSSET PLATE SCHEDULE  
Ref. 1/85.84

F1 GUSSET PLATE SCHEDULE			
MARK	THICKNESS	a	b
F1-A	1 1/2"	1'- 4"	2'- 2"
F1-B	1"	1'- 6 7/8"	1'- 9"
F1-C	1"	1'- 9"	1'- 5"
F1-D	1"	1'- 10 1/8"	1'- 1 1/2"
F1-E	1"	1'- 9"	1'- 5"
F1-F	1"	1'- 10 1/8"	1'- 1 1/2"
F1-G	1"	1'- 8 3/4"	1'- 5 3/4"
F1-H	1"	1'- 10 1/8"	1'- 1 1/4"

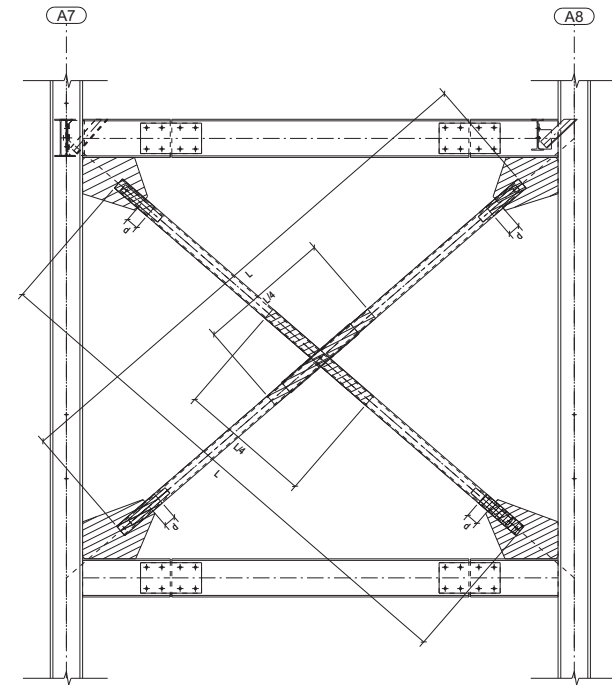


F3 GUSSET PLATE SCHEDULE  
Ref. 3/85.84

F3 GUSSET PLATE SCHEDULE			
MARK	THICKNESS	a	b
F3-A	1 1/2"	1'- 1 3/8"	2'- 2"
F3-B	1"	1'- 2"	1'- 6 5/8"
F3-C	1"	1'- 5 3/8"	1'- 0 1/8"
F3-D	1"	1'- 5"	11 7/8"
F3-E	1"	1'- 5 7/8"	10 1/2"
F3-F	1"	1'- 6 1/8"	10 1/4"



DETAIL 13 - PROTECTED ZONE ELEVATION  
E13  
Ref. 4/85.84



PROTECTED ZONE ELEVATION

INDICATE PROTECTED ZONE AS PER  
AISC 341 SECTION 15.9 AND 7.4  
Ref. E14 FOR PROTECTED ZONE NOTES

B	Re-issued for Approval	03-24-2013	S. Patel	K.P.
REV.	DESCRIPTION	DATE	BY	CHK