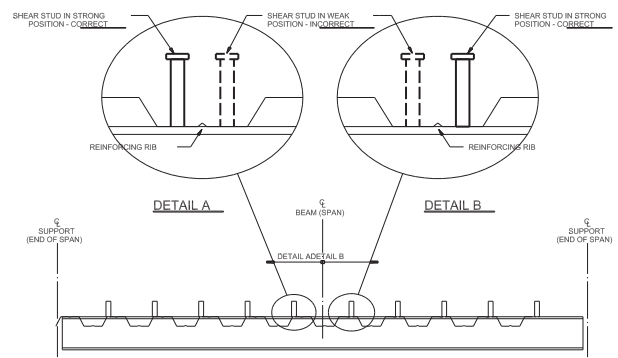


NOTE: ALL SHEAR STUDS IN DECK FLUTES SHALL BE PLACED IN STRONG POSITION. A STUD PLACED ON THE SIDE OF THE REINFORCING RIB NEAREST THE END OF THE SPAN IS IN THE STRONG POSITION.



B	Re-issued for Approval	03-24-2013	S.Patel	K.P.
REV.	DESCRIPTION	DATE	DWN	CHK