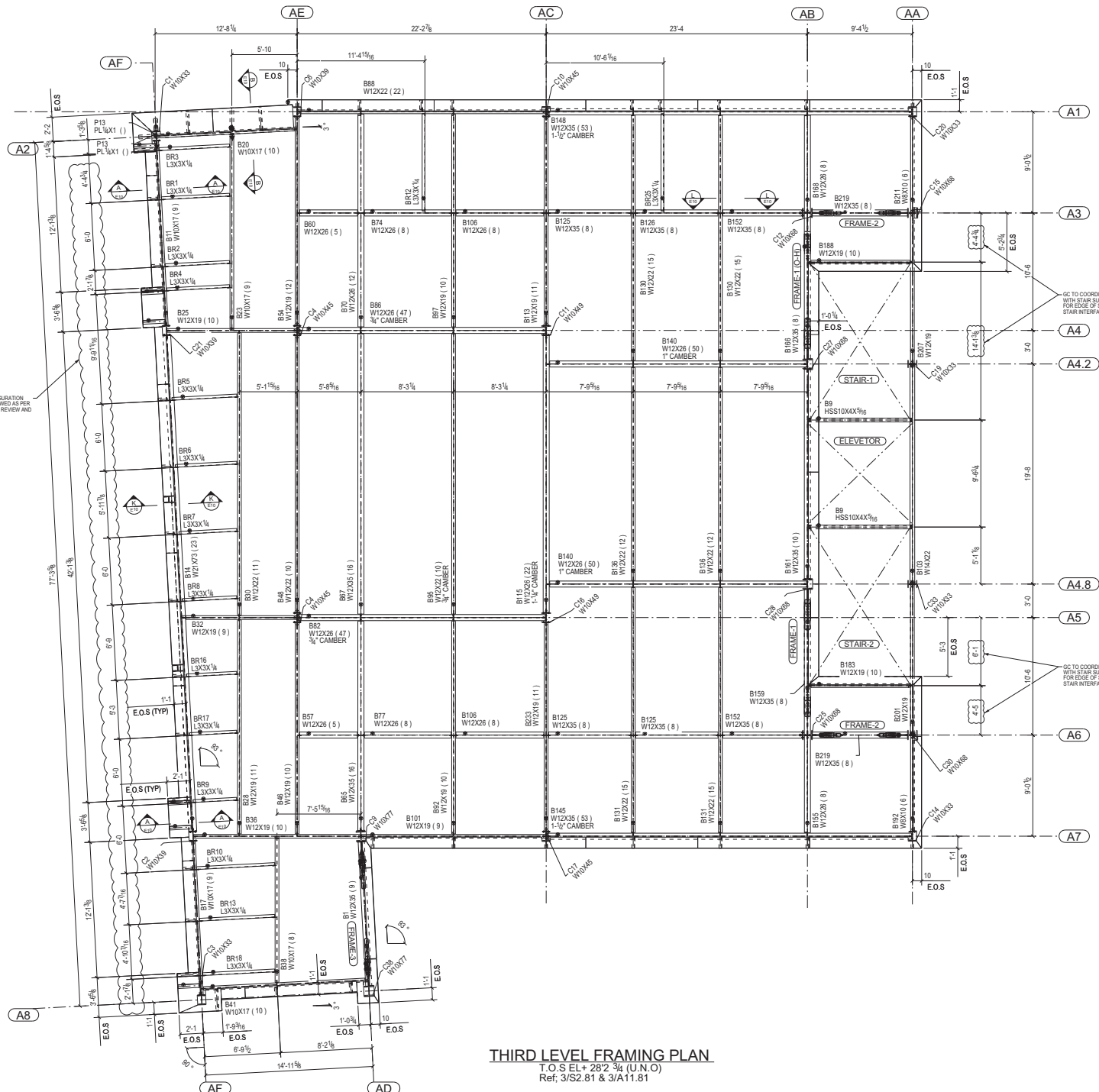




TRUE NORTH



PROJECT NORTH



B100 = ASSEMBLY MARK
 W12X26(10) = PROFILE(NO. OF STUD)
 1"CAMBER = CAMBER VALUE

- LEGEND;
- 1, EL. = ELEVATION
 - 2, T.O.S = TOP OF STEEL
 - 3, E.O.S = EDGE OF SLAB
 - 4, ▲ = MOMENT CONNECTION
 - 5, ⓐ = ORIENTATION MARK

- 1, Ref. E13 FOR FRAME-1 AND FRAME-1 O-H ELEVATION & DETAILS
- 2, Ref. E14 FOR FRAME-2 ELEVATION AND DETAILS
- 3, Ref. E15 FOR FRAME-3 ELEVATION AND DETAILS

THIRD LEVEL FRAMING PLAN
 T.O.S EL: 28'2 3/4 (U.N.O)
 Ref: 3/S2.81 & 3/A11.81

B	Reissued for Approval	03-24-2013	S.Patel	K.P
REV.	DESCRIPTION	DATE	DWN	CHK