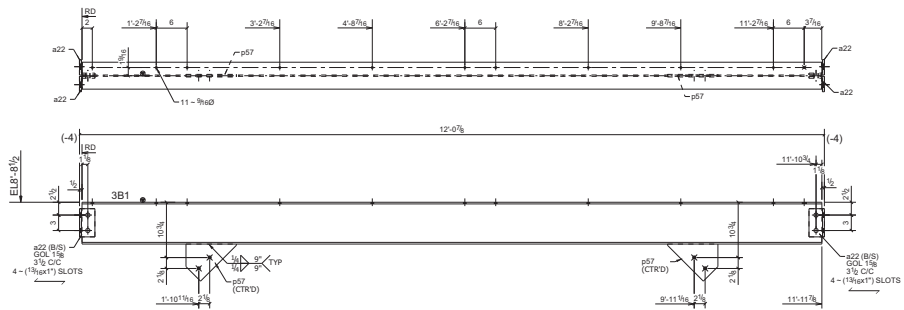
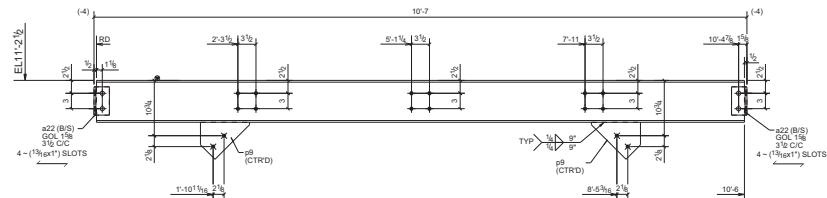


BILL OF MATERIAL

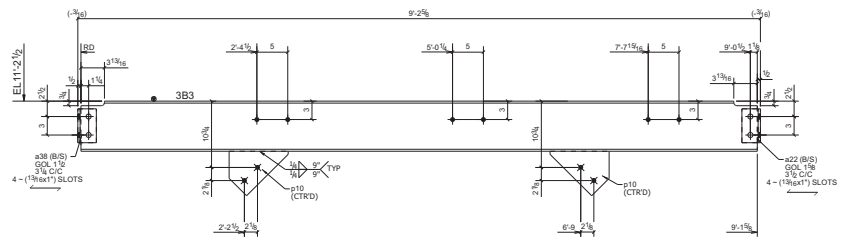
MARK	QTY	DESCRIPTION	LENGTH	WEIGHT	REMARKS
3B1	1				SO-2
w4	1	WBX18	11'-11 7/8"	215	A36
a22	4	L3X3X3/8	0'-5 1/2"	13	A36
p57	2	PL 1/2X7 3/16"	0'-8 5/8"	12	A36
	4	3/4"Ø ASDIN BOLT	0'-2 1/4"	2	
3B2	3				SO-2
w1	3	WBX18	10'-0"	564	A36
a22	12	L3X3X3/8	0'-5 1/2"	39	A36
p9	6	PL 1/2X7 3/16"	0'-8 5/8"	36	A36
	12	3/4"Ø ASDIN BOLT	0'-2 1/4"	7	
3B3	1				SO-2
w2	1	WBX18	9'-1 5/8"	164	A36
a22	2	L3X3X3/8	0'-5 1/2"	7	A36
a16	2	L3X3X3/8	0'-5 1/2"	7	A36
x10	2	PL 1/2X7 3/16"	0'-8 5/8"	12	A36
	4	3/4"Ø ASDIN BOLT	0'-2 1/4"	2	
3B4	1				SO-2
w6	1	WBX18	9'-1 5/8"	164	A36
a22	4	L3X3X3/8	0'-5 1/2"	13	A36
p58	2	PL 1/2X7 3/16"	0'-8 5/8"	12	A36
	4	3/4"Ø ASDIN BOLT	0'-2 1/4"	2	
3B5	1				SO-2
w4	1	WBX18	9'-8 1/2"	69	A36
a22	4	L3X3X3/8	0'-5 1/2"	13	A36
a27	4	L4X3X3/8	0'-5 1/2"	15	A36
p8	1	PL 3/8X10 3/16"	0'-11 1/2"	12	A36
p61	1	PL 3/8X5 1/16"	1'-1 5/8"	14	A36
	8	3/4"Ø ASDIN BOLT	0'-2 1/4"	5	
TOTAL WEIGHT THIS DRAWING				1400	



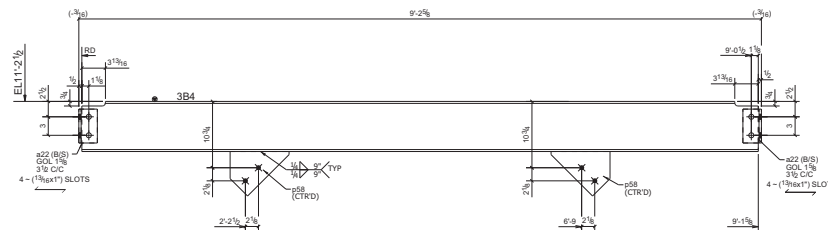
ONE - BEAM - 3B1



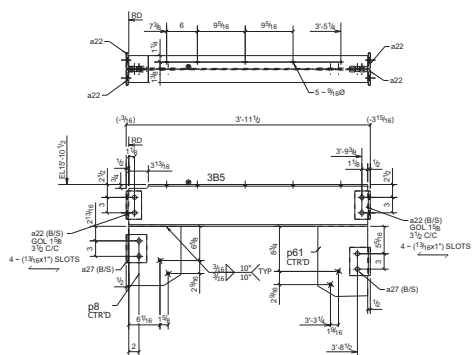
3 - BEAMS - 3B2



ONE - BEAM - 3B3



ONE - BEAM - 3B4



ONE - BEAM - 3B5

NOTES;

1. PAINT: HOT DIP GALVANIZED TO STANDARD G - 60
2. ALL HOLES ARE 1 3/16" Ø U.N.O
3. ALL COPES ARE 1/2" Ø U.N.O

B	ISSUED FOR RE-APPROVAL	VBM	SP	10/23/13
A	ISSUED FOR APPROVAL	VBM	SP	10/15/13
NO.	REVISION	BY	CHK	DATE