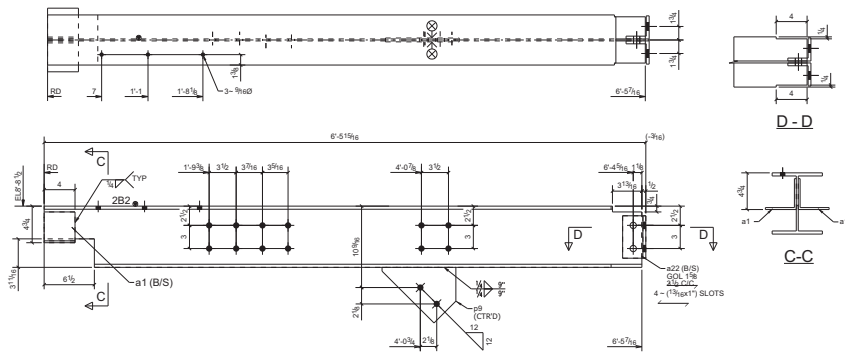
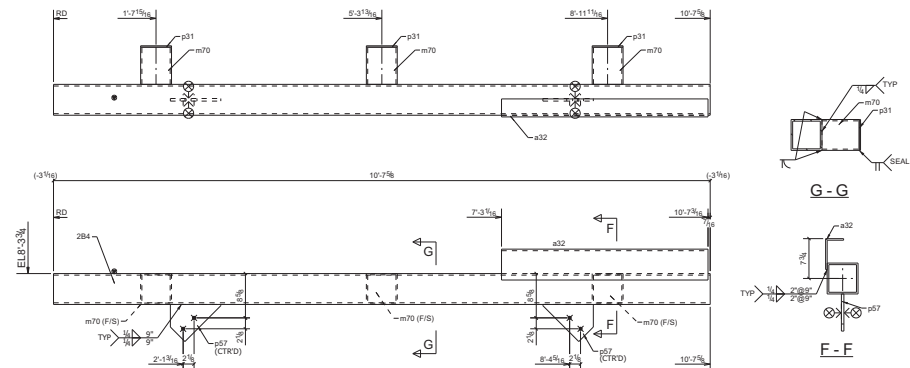


ONE - BEAM - 2B1

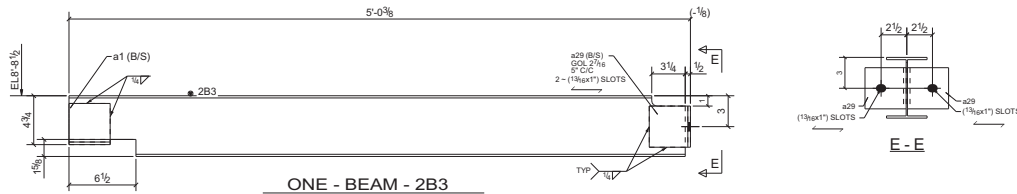
BILL OF MATERIAL					
MARK	QTY	DESCRIPTION	LENGTH	WEIGHT	REMARKS
wB1	1	WB24	14'-3 3/8"	344	A992
P2	4	PL3/8"x3 1/8"	0'-7 1/8"	9	A36
a22	4	L3X3X3/8	0'-6 1/2"	13	A36
p78	1	PL1/2"x5 5/8"	0'-9 5/8"	6	A36
	4	3/4"x8 A325N BOLT	0'-2 1/4"	2	
2B2	1				90-2
wB4	1	WB24	6'-5 7/8"	156	A992
a1	2	L4X4X1/4	0'-4"	4	A36
a22	2	L3X3X3/8	0'-6 1/2"	7	A36
p78	1	PL1/2"x7 3/16"	0'-9 5/8"	6	A36
	2	3/4"x8 A325N BOLT	0'-2 1/4"	1	
2B3	1				90-2
wB1	1	WB20	4'-11 7/8"	46	A992
a1	2	L4X4X1/4	0'-4"	4	A36
a23	2	L4X4X1/4	0'-4"	4	A36
2B4	1				90-2
m1	1	HSS80X5/16	10'-7 5/8"	233	A500-GR-B
a32	1	LRK3-1/2X3/16	3'-4 1/8"	33	A36
m70	3	HSS80X1/4	0'-7 1/4"	32	A500-GR-B
p31	3	FL1/4"x3"	0'-6"	8	A36
p57	2	FL1/2"x7 1/8"	0'-10 1/8"	12	A36
TOTAL WEIGHT THIS DRAWING				920	



ONE - BEAM - 2B2



ONE - BEAM - 2B4



ONE - BEAM - 2B3

NOTES;

1. PAINT: HOT DIP GALVANIZED TO STANDARD G - 60
2. ALL HOLES ARE 1 3/16" Ø U.N.O
3. PROVIDE BREATH HOLES FOR GALVANIZING, IF REQUIRED
4. ALL COPES ARE 1/2" Ø U.N.O

B	ISSUED FOR RE-APPROVAL	VBM	SP	10/23/13
A	ISSUED FOR APPROVAL	VBM	SP	10/15/13
NO.	REVISION	BY	CHK	DATE
	DATE	BY		