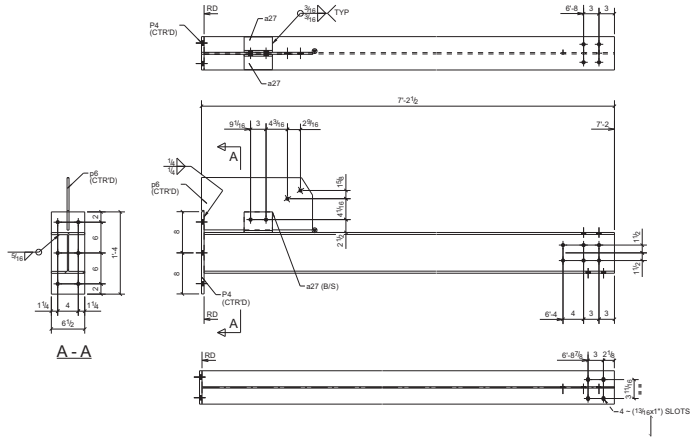
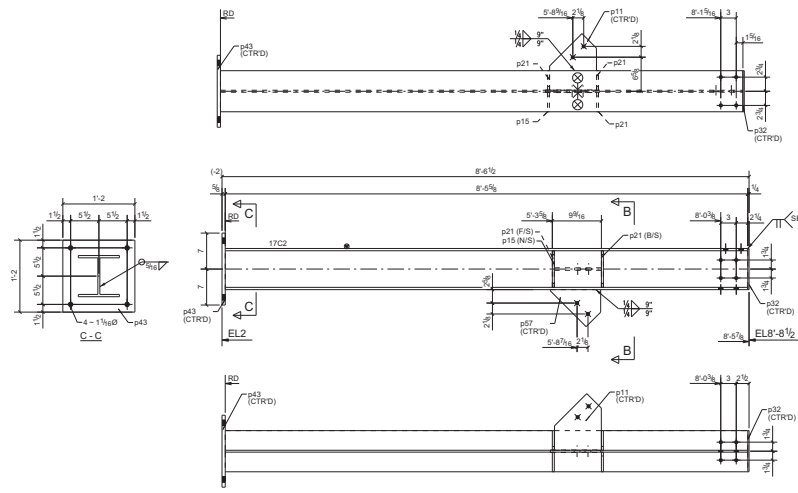


BILL OF MATERIAL

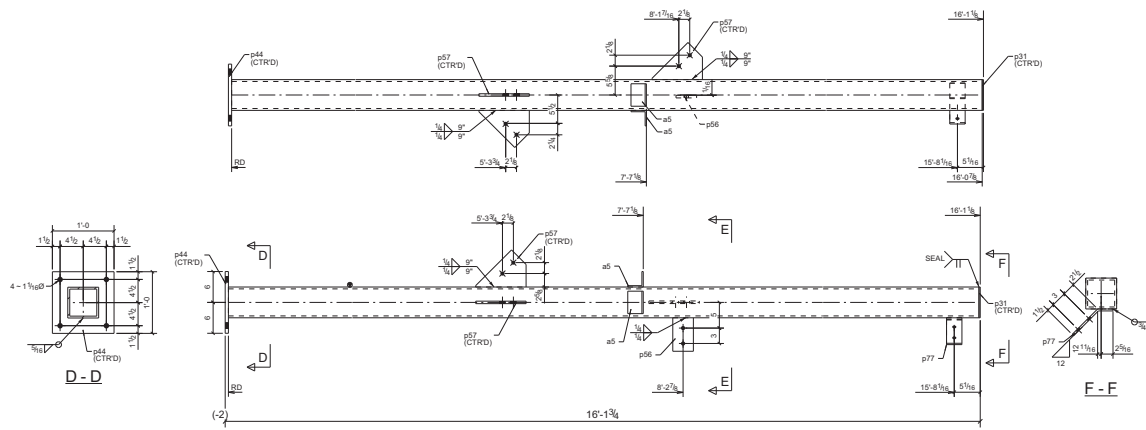
MARK	QTY	DESCRIPTION	LENGTH	WEIGHT	REMARKS
17C1	1				SG-2
w#8	1	WBK24	7'-2"	173	A802
p4	1	FL12X9 1/2"	1'-4"	15	A38
a07	2	LAX3X3	0'-6 1/2"	8	A38
p6	1	FL3/8X10 3/16"	1'-8 9/16"	23	A38
17C2	1				SG-2
w#9	1	WBK31	8'-5 5/8"	263	A802
p11	1	FL12X9 1/8"	0'-11"	11	A38
p15	1	FL3/8X3 13/16"	0'-7 1/8"	3	A38
a21	3	FL3/8X3 13/16"	0'-7 1/8"	8	A38
p32	1	FL14X9"	0'-4"	5	A38
p43	1	FL6X14"	1'-2"	35	A38
p55	1	FL12X7 1/8"	0'-10 1/8"	8	A38
17C3	1				SG-2
w#7	1	HSSBXK38	16'-0 7/8"	415	A500-GR.B
w5	2	L3X3X1/4	0'-4 3/8"	4	A38
p31	1	FL14X8"	0'-4"	3	A38
p44	1	FL8X12"	1'-0"	26	A38
p58	1	FL12X4"	0'-6 1/2"	4	A38
p57	3	FL12X2 1/8"	0'-10 1/8"	18	A38
p77	1	FL3/8X7"	0'-9 1/8"	3	A38
TOTAL WEIGHT THIS DRAWING				1019	



ONE - COLUMN - 17C1



ONE - COLUMN - 17C2



ONE - COLUMN - 17C3

- NOTES;
1. PAINT: HOT DIP GALVANIZED TO STANDARD G-60
 2. ALL HOLES ARE 1 3/16" Ø U.N.O
 3. PROVIDE BREATH HOLES FOR GALVANIZING, IF REQUIRED
 4. ALL COPES ARE 1/2" Ø U.N.O

B	ISSUED FOR RE-APPROVAL	VBM	SP	10/23/13
A	ISSUED FOR APPROVAL	VBM	SP	10/15/13
NO.	REVISION	BY	CHK	DATE