

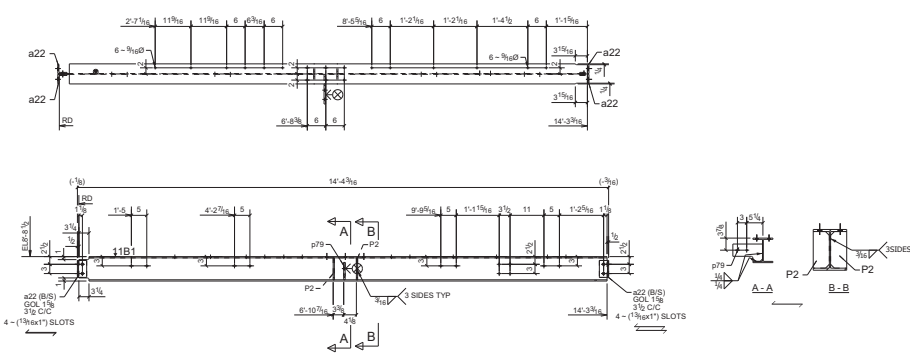
BILL OF MATERIAL

MARK	QTY	DESCRIPTION	LENGTH	WEIGHT	REMARKS
11B1	1				SO-2
w63	1	W6X24	14'-3 3/16"	344	A992
p25	4	FL38FX10 118"	0'-11 1/2"	9	A36
a22	4	L3X3X3/8	0'-6 1/2"	13	A36
a76	1	FL12X5 64"	0'-9 5/8"	6	A36
	4	3/4"Ø A533N BOLT	0'-2 1/4"	2	
11B2	1				SO-2
w48	1	W10X22	4'-8 1/4"	104	A992
a25	2	L4X3X3/8	0'-6 1/2"	8	A36
w48	2	L3X3X1/4	1'-0 5/8"	18	A992
a72	2	L4X3X3/8	0'-6 1/2"	8	A36
11B3	1				SO-2
w42	1	W6X10	8'-0"	89	A992
a27	6	L4X3X3/8	0'-6 1/2"	23	A36
a88	1	FL38FX10 151"	0'-10 13/16"	11	A36
	2	3/4"Ø A533N BOLT	0'-2 1/4"	1	
11B5	1				SO-2
w58	1	W6X18	3'-10 1/2"	69	A992
a22	4	L3X3X3/8	0'-6 1/2"	13	A36
a27	4	L4X3X3/8	0'-6 1/2"	15	A36
w44	1	FL38FX10 314"	0'-11 1/2"	12	A36
w65	1	FL38FX10 1118"	1'-3 5/8"	14	A36
	8	3/4"Ø A533N BOLT	0'-2 1/4"	5	
11B6	1				SO-2
w44	1	W6X18	9'-1 3/4"	164	A992
a22	2	L3X3X3/8	0'-6 1/2"	7	A36
a26	2	L3X3X3/8	0'-6 1/2"	7	A36
	4	3/4"Ø A533N BOLT	0'-2 1/4"	2	
TOTAL WEIGHT THIS DRAWING				943	

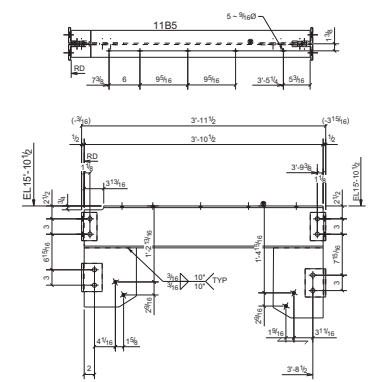
11B4 CHANGED TO 6B4

- NOTES;
1. PAINT: HOT DIP GALVANIZED TO STANDARD G -60
 2. ALL HOLES ARE 1/16 Ø U.N.O
 3. ALL COPES ARE 1/2" Ø U.N.O

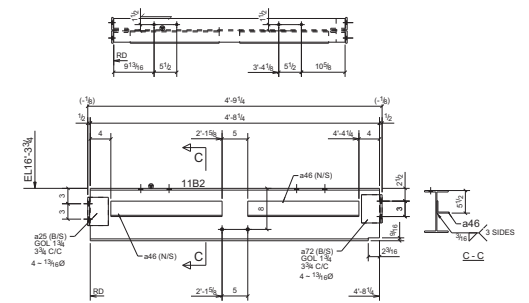
B	ISSUED FOR RE- APPROVAL	VBM	SP	10/23/13
A	ISSUED FOR APPROVAL	VBM	SP	10/15/13
NO.	REVISION	BY	CHK	DATE



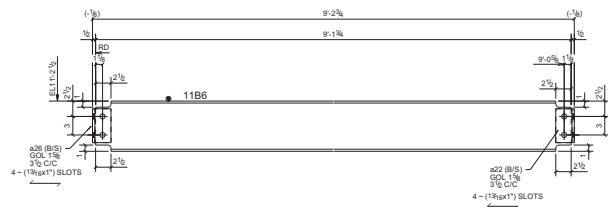
ONE - BEAM - 11B1



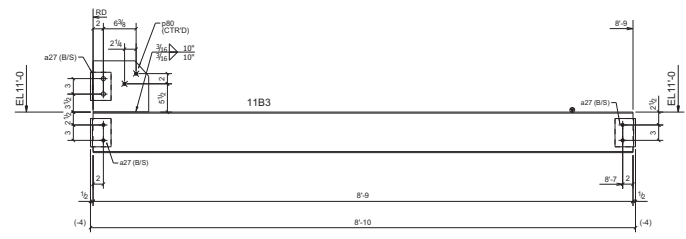
ONE - BEAM - 11B5



ONE - BEAM - 11B2



ONE - BEAM - 11B6



ONE - BEAM - 11B3